

NR500 Series Industrial Cellular VPN Router

Application Note 017

Port Mapping

Version: V1.0.0
Date: 2018/09/15
Status: Confidential



Directory

1. Introduction.....	3
1.1 Overview.....	3
1.2 Compatibility.....	3
1.3 Version.....	3
1.4 Corrections.....	3
2. Topology.....	4
3. Configuration.....	5
3.1 HTTP File Server Configuration.....	5
3.2 Port Mapping Configuration.....	6
4. Testing.....	6
4.1 Test.....	6

1. Introduction

1.1 Overview

This document contains information regarding the configuration and use of Port Mapping on NR500 Series.

This guide has been written for use by technically competent personnel with a good understanding of the communications technologies used in the product, and of the requirements for their specific application.

1.2 Compatibility

This application note applies to:

Models Shown: NR500 series.

Firmware Version: V1.0.0(903.0) or newer

Other Compatible Models: None

1.3 Version

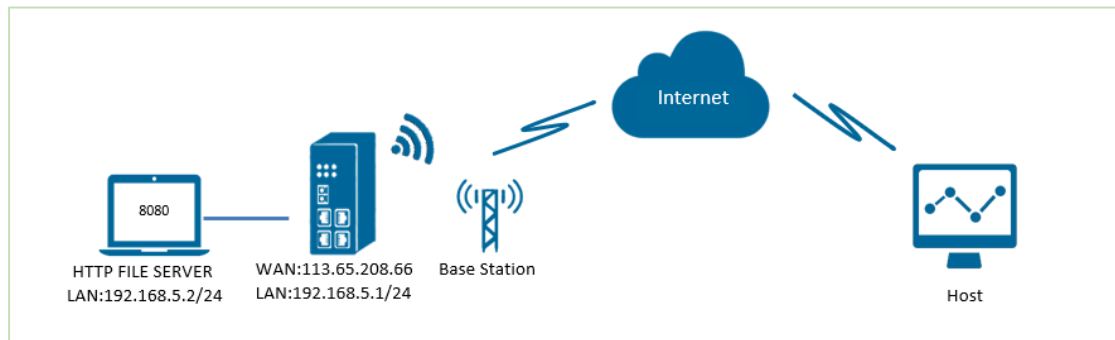
Updates between document versions are cumulative. Therefore, the latest document will include all the content of previous versions.

Release Date	Doc. Version	Firmware Version	Change Description
2018/09/15	V1.0.0	V1.0.0(903.0)	First released

1.4 Corrections

Appreciate for corrections or rectifications to this application note, and if any request for new application notes please email to: support@navigateworx.com

2. Topology

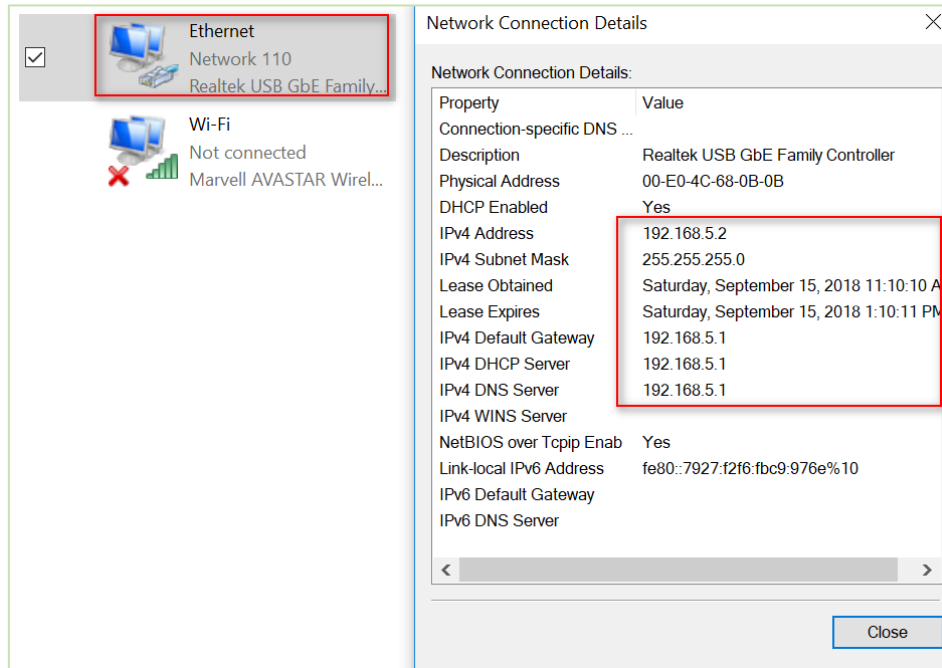


1. NR500 Pro works with a fixed public IP address.
2. Remote host works with any kind of IP, which can communicate with Internet and reach NR500 Pro.
3. Remote host access HTTP FILE SERVER behind NR500 PRO via Port Mapping.

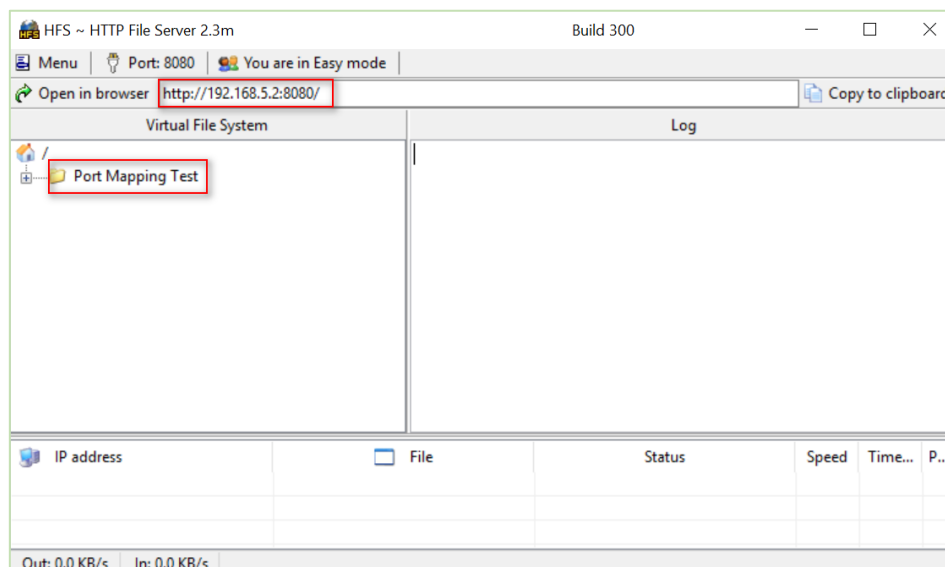
3. Configuration

3.1 HTTP File Server Configuration

1. Set up IP address on PC behind NR500 Pro to make it ping NR500 Pro successfully.

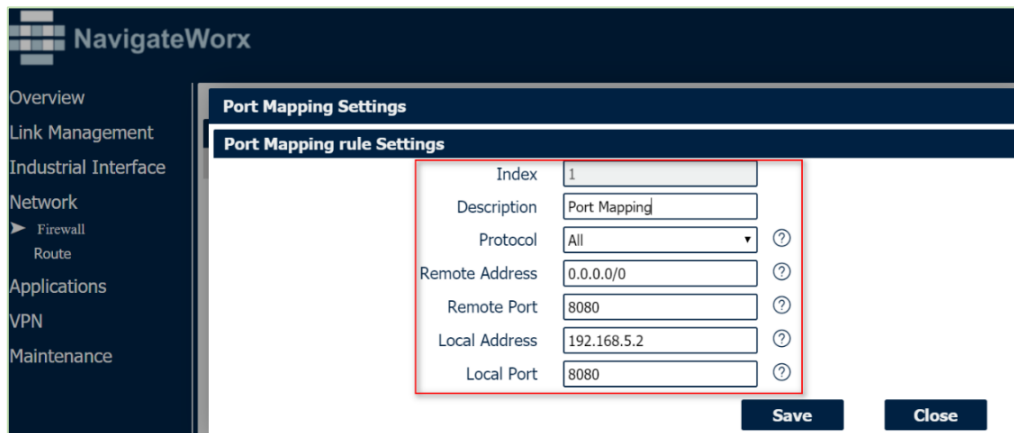


2. Enable HTTP FILE SERVER on the PC.



3.2 Port Mapping Configuration

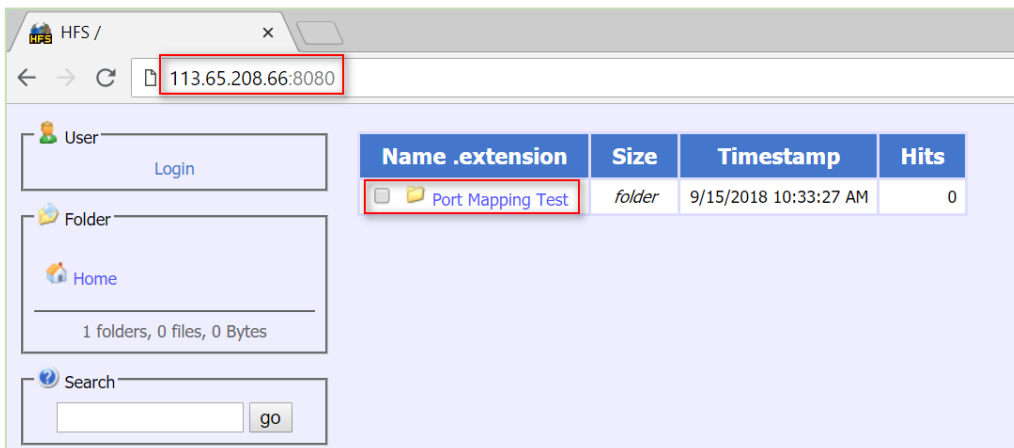
1. Go to **Network>Firewall>Port Mapping**, setting like below:



4. Testing

4.1 Test

1. Access the HTTP FILE SERVER from remote host with: **http:// 113.65.208.66:8080**



2. Test successfully.

Note: Please turn off the Firewall on PC behind NR500 Pro.